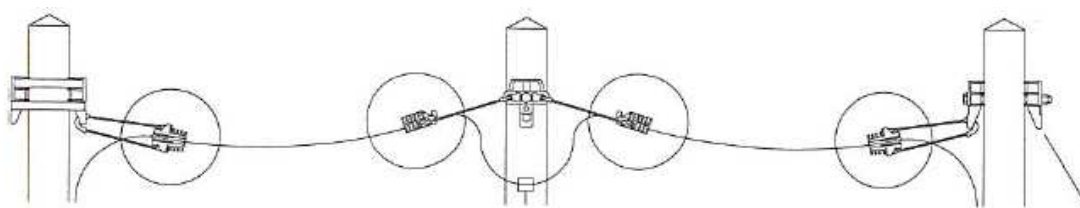


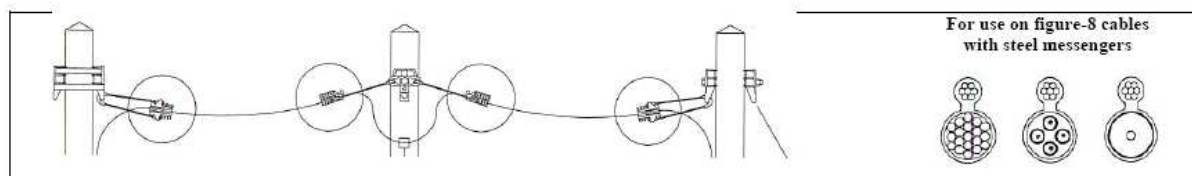
Technická specifikace - závěsy

Kotvy pro kabely fig 8	2
Kotvy pro kabely fig 8	3
Příklad použití kotvy:.....	4
Příklad použití průběžné svoky 30/34	5
Příklad použití kotvy:.....	6
Příklad použití kotvy – pokr.	7
Příklad použití průběžného závěsu	8
Ukončení ocelového lana BWC	9
Příklad použití kotev pro koncové kabely	10
Univerzální držák na sloup UPB	11
Univerzální držák na sloup 7/05	12
Príslušenství a nářadí	13
Príslušenství a nářadí – pokr.	14



Kotvy pro kabely fig 8

(s ocelovým lankem)



AC6 260



AC7 500



AC10 500

Description	Function
These anchoring clamps are made of one opened conical body, a pair of metallic jaws and a flexible bail. All parts are secured together to prevent any loss of parts.	These clamps allow an easy, quick and direct dead-ending of aerial figure-8 cables with steel messengers without need to strip or separate the messengers.

Range

Anchoring clamp Clamp reference	Bail length	Figure-8 cable with steel messenger		
		Messenger diameter over insulation	Installation load*	
			min.	max.
AC6 260	260 mm	3 – 6 mm	40 daN	100 daN
AC7 500	500 mm	4 – 7 mm	60 daN	250 daN
AC10 500	500 mm	7 – 10 mm	200 daN	500 daN

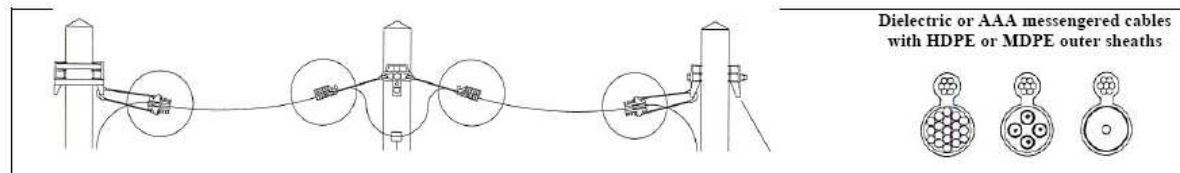
- A 3 safety factor is taken into account, and the clamps can withstand 3 times the maximum loads shown in this table (tests carried out on reference cables).

Characteristics

Clamp	Materials			Weight	Packaging
	Body	Jaws	Bail		
AC6 260	Thermoplastic	Zinc alloy	Stainless steel	0.09 kg	100
AC7 500	Aluminium alloy	Zinc alloy	Stainless steel	0.17 kg	80
AC10 500	Aluminium alloy	Zinc alloy	Stainless steel	0.30 kg	50

Kotvy pro kabely fig 8

(s díl. tažným prvkem nebo AL slitinou)



AC35 260



AC68 260

Description	Function
These anchoring clamps are made of one opened conical body, a pair of tapered thermoplastic jaws and a flexible bail. All parts are secured together to prevent any loss of parts.	These anchoring clamps allow an easy and quick installation of figure-8 cables with all aluminium alloy (AAA) or dielectric messengers (Kevlar, FRP) by gripping directly onto the HDPE or MDPE messenger outer sheath.

Range

Anchoring clamp Clamp reference	Bail length	Figure-8 cable with steel messenger	
		Messenger diameter over insulation	Installation load* min. max.
AC35 260	260 mm	3 – 6 mm	40 daN 100 daN
AC68 260	260 mm	5 – 8 mm	40 daN 140 daN

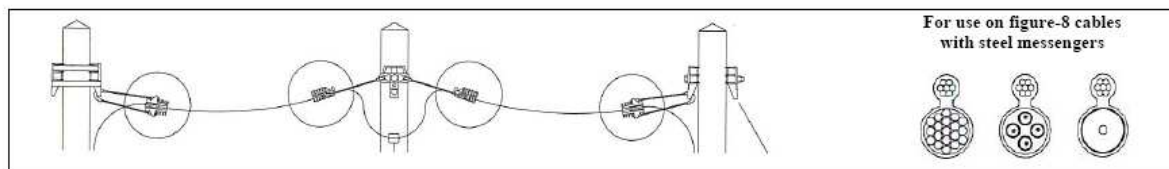
* A 3 safety factor is taken into account, and the clamps can withstand 3 times the maximum loads shown in this table (tests carried out on reference cables).

Characteristics

Clamp	Materials			Weight kg	Packaging pieces
	Body	Wedges	Bail		
AC35 260	UV protected thermoplastic	UV protected thermoplastic	Stainless steel	0.110	100
AC68 260	UV protected thermoplastic	UV protected thermoplastic	Stainless steel	0.110	100

Příklad použití kotvy:

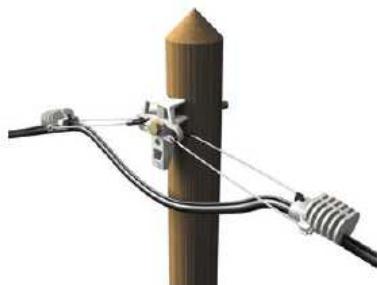
Kotvy pro kabely fig 8 (s ocelovým lankem)



Termination point : dead-ending



Joining point : double dead-ending



Intermediate angle point : double anchoring

Installation procedures

These clamps are to be installed without any preparation job on the cable messenger (no stripping / no cutting) :

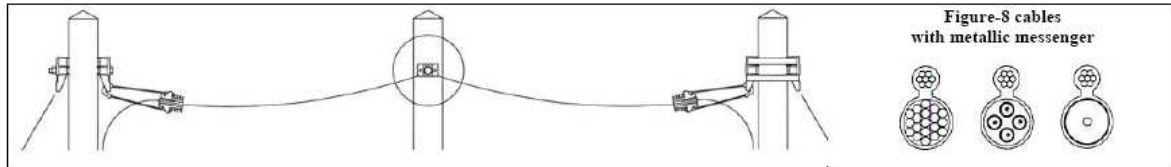
- Secure the clamp to the pole hardware by passing the free end of the bail into the bracket or the hook.
- Position the jaws on the cable messenger without stripping it nor separating it from the cable.
- Hand push the jaws into the clamp body to start the gripping into the messenger insulation.
- When the cable is brought to its stringing tension the jaws move forward into the clamp body, cut through the outer sheath to grip directly onto the steel core wires.

Features

- **Easy**
Telenco anchoring clamps installation procedures are basic, which reduces possible misuse or risks of injuries during installation. Because this technology is so easy to use it can be quickly introduced with installation teams at no training cost and without radically changing other working practices.
- **Quick**
By using Telenco anchoring clamps you can cut down installation times to just few seconds. Just forget the time usually spent to prepare the cable (separation and stripping of the messenger) and the use of tools like spanners, knives, cable strippers...
- **Safe**
No cutting tools are required when using Telenco clamps to secure the cables, thus reducing the risks of injuries for the linemen, of faulty installations and of damage to the cables. Also there is no need to cut the messenger, which means its electrical continuity is preserved.
- **Reliable**
Tests carried out in laboratories have proved that Telenco clamps offer a great protection of figure-8 cables against wind induced vibrations, thus improving the reliability of aerial telecom networks.
- **Savings**
In installation time, training time, products, maintenance...

Příklad použití průběžné svoky 30/34

pro kabely s fig.8



Suspension clamp 30/34



Securing with one pole band



Securing with one bolt

Description	Features
<p>The suspension clamp is composed of a UV resistant thermoplastic jaw reinforced with two galvanised steel plates.</p> <p>Its unique patented design has been developed to offer a common hardware fitting covering all suspension situations on wooden, metal or concrete poles.</p> <p>Its curved grooves and the reversibility of the system allow the clamp to be installed at intermediate poles on cables routes with angles up to 25°.</p> <p style="text-align: center;">Securing</p> <ul style="list-style-type: none"> ▪ <u>With a steel band</u> The clamp can be installed on wood poles, round concrete poles and polygonal metallic poles with one 20mm or ¾" pole banding SB204 or SB207 and one buckle B20. ▪ <u>With a bolt</u> The clamp can also be installed with one bolt 14x225 mm or 16x250 mm on drilled wood poles. 	<ul style="list-style-type: none"> ❑ The 30/34 clamp has two grooves to cover all messenger sizes from 4 to 9 mm (Ø over the outer sheath). ❑ It can be installed on all types of poles with one steel band or one through bolt (drilled poles). ❑ The screws can be easily and quickly tightened with a 13 mm standard 6-point spanner. ❑ The clamp plastic inserts act as a fuse to limit damage on the cable in case of abnormal vertical overload (tree, car crash ...). ❑ The steel reinforcing plates have two supports with holes designed for hanging a roller during the running-out of the cable or two drop wire clamps. ❑ The nylon parts provide a 4 kV dielectric insulation between the cable messenger and the pole / clamp.

Characteristics

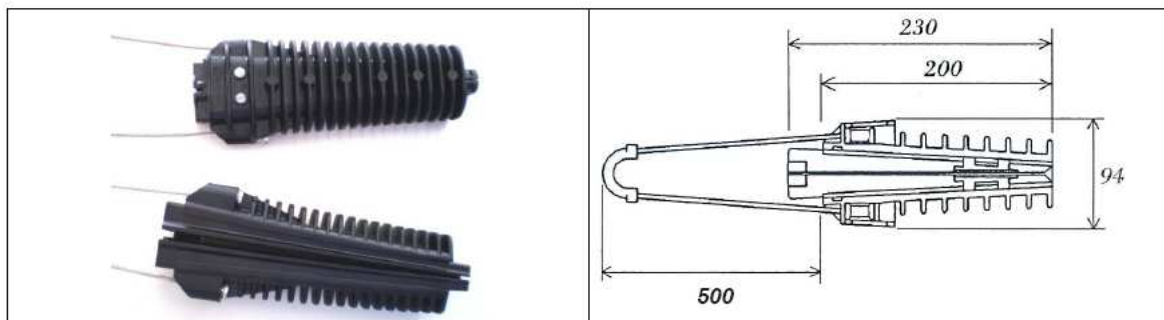
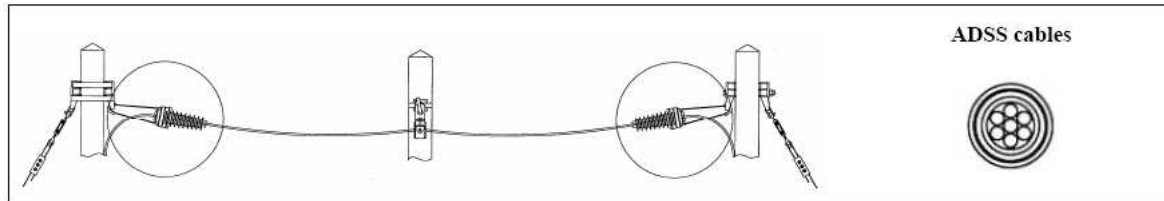
Ø of messenger over outer sheath	Weight	Packaging
Small groove : 4 to 5 mm	0,24 kg	100
Large groove : 6 to 9 mm		

Materials

Jaw	Reinforcing plates	Screws
UV resistant thermoplastic	Hot dip galvanised steel	

Příklad použití kotvy:

Kotvy pro optické kabely ADSS do vzdálenosti 100m



Description	Features
<p>These anchoring clamps are made of one opened conical fibre glass reinforced body, a pair of plastic wedges and a flexible bail.</p> <p>Function</p> <p>The ACADSS series of anchoring clamps allow an easy and quick securing of Ø 8 to 20 mm aerial circular fibre optic cables (ADSS) on short spans (up to 100 meters).</p>	<p>The ACADSS series is composed of different models of clamps offering a wide range of gripping capacities and mechanical resistance. This flexibility enables us to propose optimised and tailor made clamp designs depending on the ADSS cable constructions.</p> <p>We request our customers to send us their ADSS cable technical pages as well as 5 meters of cable for qualification of a specific clamp model on our tensile test bench.</p>

Range

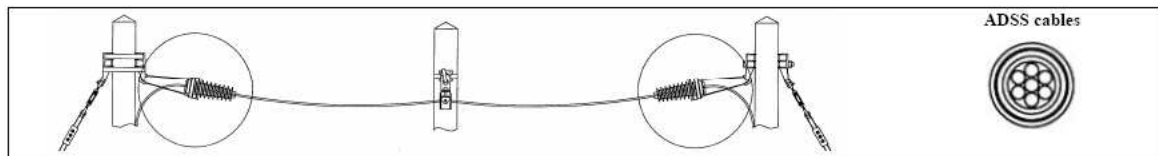
Anchoring clamp		ADSS cable
Clamp reference	Ø over outer sheath	Max. working load
ACADSS10	8 to 12 mm	See cable technical page.
ACADSS12	10 to 14 mm	
ACADSS14	12 to 16 mm	Mechanical tests need to be performed in our laboratory on a sample of cable.
ACADSS16	14 to 18 mm	
ACADSS18	16 to 20 mm	

Characteristics

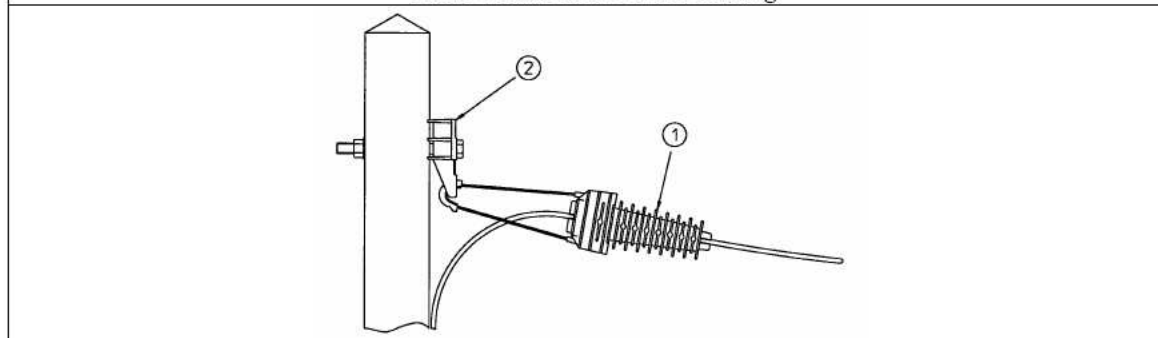
Body	Material		Weight (kg)	Packaging
	Wedges	Bail		
UV protected thermoplastic		Stainless steel	0,400	30 units

Příklad použití kotvy – pokr.

Kotvy pro optické kabely ADSS

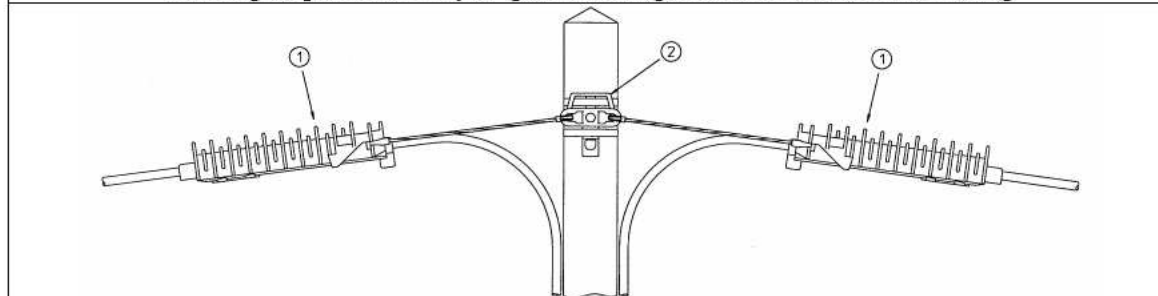


Cable termination : dead-ending



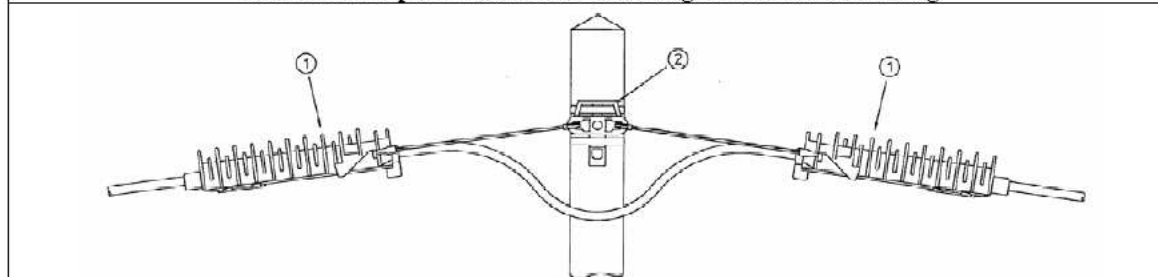
Consisting of : 1 anchoring clamp ACADSS (1) + 1 universal pole bracket UPB (2)
 Securing : 1 bolt Ø 14 or 16 mm (drilled poles) or 2 pole bandings 20 mm SB204 or SB207 with 2 buckles B20

Jointing on pole and every 5th pole on straight routes : double dead-ending



Consisting of : 2 anchoring clamps ACADSS (1) + 1 universal pole bracket UPB (2)
 Securing : 1 bolt Ø 14 or 16 mm (drilled poles) or 2 pole bandings 20 mm SB204 or SB207 with 2 buckles B20

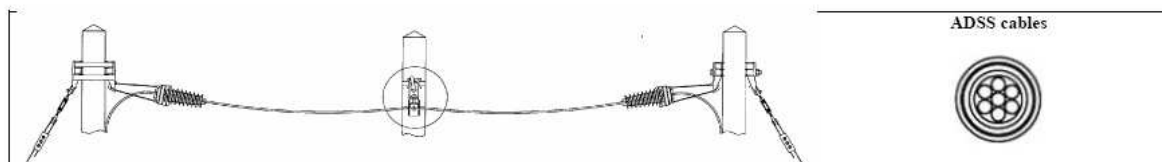
Intermediate poles with cable route angle : Double anchoring



Consisting of : 2 anchoring clamps ACADSS (1) + 1 universal pole bracket UPB (2)
 Securing : 1 bolt Ø 14 or 16 mm (drilled poles) or 2 pole bandings 20 mm SB204 or SB207 with 2 buckles B20

Příklad použití průběžného závěsu

J Hook Clamp JHC



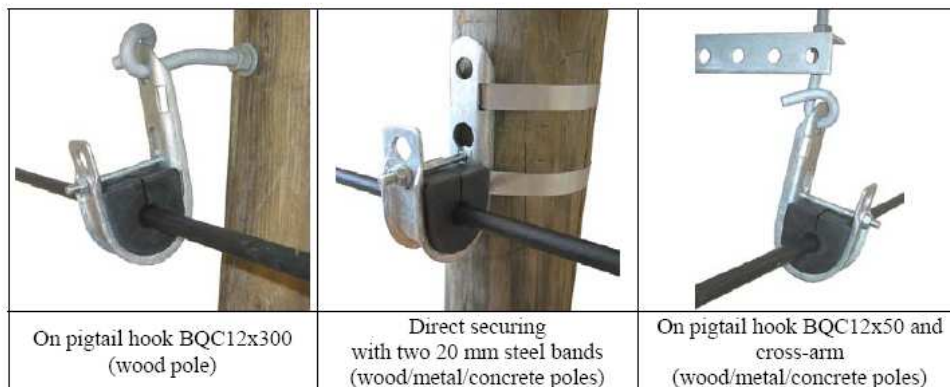
J Hook Clamp JHC

Field of use

Suspension of \varnothing 10 to 20 mm ADSS cables at intermediate poles on short spans (up to 100 m).
Installation on straight cable routes or with angles of max. 25° . In case of more severe angles protect the cable by installing 2 anchoring clamps.

Installation

- With two 20 mm steel bands (fixed suspension on wood, metal or concrete poles)
- With 1 pigtail hook BQC12x50 on cross-arm (articulated suspension on wood, metallic or concrete poles)
- With 1 pigtail hook BQC12x300 (articulated suspension on wood or drilled concrete poles only)



Characteristics

Reference	Capacity	Body (1)	Material Insert	Screw	Weight (kg)	Packaging
JHC1015	10 – 15 mm	Galvanised steel	UV protected neoprene	Protected steel	0.59	20 Units
JHC1520	15 – 20 mm	Galvanised steel	UV protected neoprene	Protected steel	0.57	

Ukončení ocelového lana BWC



Description

These automatic clamps are made of :

- a conical body,
- a pair of jaws,
- a collar,
- a bail

4kV or 11kV insulated models equipped with flexible bails are available on request.

Function

The bare wire clamps allow an easy and quick dead-ending of stripped steel messengers, bare catenary wires and stay wires. They are the ideal answer for network maintenance and pole replacement works when there is an existing bare wire.

On new figure-8 cables routes it is cheaper and quicker to install AC6/7/10 anchoring clamps as the unsheathing of the catenary wire / messenger is not required with these clamps.

Range

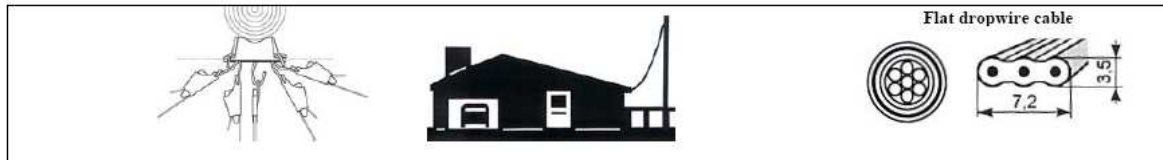
Clamp reference	Nominal Ø / Type of cable	Range	Minimum breaking load	
			rigid bail	flexible bail
BWC25	Ø 2.5 mm / 7x0.8 mm	2.1 – 2.9 mm	750 daN	450 daN
BWC31	Ø 3.1 mm / 7x1.03 mm	2.9 – 3.3 mm	750 daN	450 daN
BWC47	Ø 4.7 mm / 7x1.57 mm	4.4 – 5.1 mm	1 800 daN	1 600 daN
BWC63	Ø 6.3 mm / 7x2.10 mm	6.0 – 6.6 mm	2 800 daN	1 600 daN

Add an F to the clamp reference to order the flexible bail version: BWC47F

Characteristics

Clamp reference	Body	Materials		Weight	Packaging
		Jaws	Bail		
BWC25 – BWC31	Aluminium alloy	Treated steel	Stainless steel	0.052 kg	50 units
BWC47 – BWC63	Aluminium alloy	Treated steel	Stainless steel	0.165 kg	50 units

Příklad použití kotev pro koncové kabely



Drop wire clamp 5/35



Protection box to be clipped on 5/35

Function

Dead-ending and suspension of flat drop wires 5/9 et 5/99.
Qualified by France Telecom.

Allows :

- dead-ending of one drop wire (as the 5/35 product)
- the suspension of one drop wire (as the 5/36 product)
- the dead-ending of the drop wire + the protection of the connection (drop wire clamp with integrant box 5/35C).

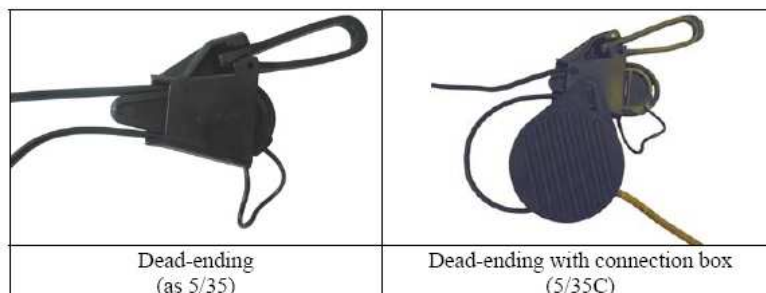
Use

Dead-ending and suspension (5/35) :

- Pass the free end of the plastic bail through the ring or cross-arm and lock the bail into the clamp body.
- Form a loop with the drop wire. Pass this loop through the stretched end of the clamp body. Place the clamp wedge into the loop.
- Adjust the drop wire load or sag by pulling the drop wire through the wedge of the clamp.

Drop wire clamp with protection box (5/35C) :

- Dead-end the drop wire as described before.
- Once the connection between the outdoor and indoor drop wires achieved, place the connectors into the protection box, clip both covers together and then clip the box onto the drop wire clamp 5/35.

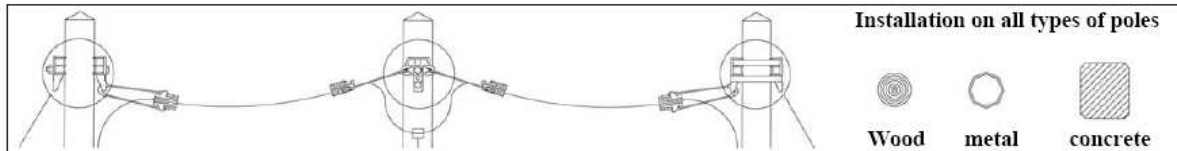


Characteristics

Telenco reference	EAN	Material	Min. failing load	Weight	Sales Unit
5/35	3411942013107	UV protected thermoplastic	125 daN	0,028 kg	200 units
5/35C	3411947686610			0,07 kg	100 units

Univerzální držák na sloup UPB

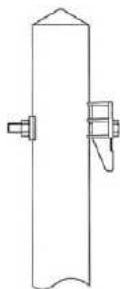
(pro dřevěné, kovové i betonové sloupy)



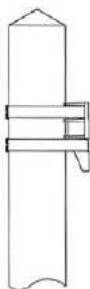
Description

The UPB bracket is manufactured from aluminium alloy with correspondingly high mechanical strength. Its unique patented design has been developed to propose a universal fitting covering all installation situations on wooden, metal or concrete poles :

- Suspension of running out rollers
- Stay systems
- Cross-arm installation
- Dead-ending of single, double or triple parallel lines.
- Dead-ending of several drop wires.
- Jointing points
- Angle points
- Derivation points



Installing with bolt



Installing with steel bands

Installation

With steel bands

The UPB bracket can be installed on any type of pole – drilled or undrilled – with two 20x0.7 mm stainless steel bands SB207 plus two buckles B20 (check our pole banding products). Usually allow two bands of one meter each per bracket.

With bolts

If the top of the pole is drilled (wooden poles, occasionally concrete poles) the UPB bracket can also be secured with a 14 or 16 mm bolt. The bolt length should be at least equal to the pole diameter + 50 mm (bracket thickness). Check our bolts.

Characteristics

Universal pole bracket UPB		
	Installation	<ul style="list-style-type: none"> • With two 20 mm or 3/4 inch steel bands • With one 14 or 16 mm dia. Bolt
	Max. working loads (Safety factor = 3)	<ul style="list-style-type: none"> • Dead-ending F1 500 daN – 1100 lbs • Dead-ending F2 300 daN – 650 lbs • Guying / stay F3 930 daN – 2050 lbs • Service lines F4 200 daN – 450 lbs • Angles F5 500 daN – 1100 lbs
	Material	Aluminium alloy
	Weight	0.2 kg - 0.44 lbs.
	Packaging unit	30

Univerzální držák na sloup 7/05

(pro dřevěné, kovové i betonové sloupy)



DESCRIPTION:

The 7/05 is galvanised steel bracket usually used for securing a bare wire clamp (BWC) or a 2-eyes turnbuckle at the pole head (dead-ending or stay).

Can also be used for securing a stay rod at the pole base (reinforcement).



INSTALLATION

Securing to wood, metal or concrete poles with 2 pole bands (SB207).

Material	Min. failing load	Weight	Sales Unit
Hot dip galvanised steel	2500 daN	0,37 kg	25 units

Příslušenství a nářadí

	Installation on all types of poles
	
	Wood Metal Concrete

Stainless steel bands in unrolling case

AISI 201, 301 or 304 stainless steel bands. Supplied in a protective dispenser.

Description	Reference	Packaging
Stainless steel band 20x0.4 mm / 50 m	SB204	5 rolls
Stainless steel band 20x0.7 mm / 50 m	SB207	5 rolls
Stainless steel band 10x0.4 mm / 50 m	SB104	5 rolls
Stainless steel band 10x0.7 mm / 50 m	SB107	5 rolls

Other dimensions available on demand.



Buckles

Standard buckles. Stainless steel.

Description	Reference	Packaging
10 mm – 3/8" standard buckles / Bag of 100	B10	unit
20 mm – 3/4" standard buckles / Bag of 100	B20	unit

Heavy type buckles. Stainless steel.

Description	Reference	Packaging
10 mm – 3/8" heavy buckles / Bag of 100	BIB10	unit
20 mm – 3/4" heavy buckles / Bag of 100	BIB20	unit



Steel band tensioning tools

Description	Reference	Packaging
Band installation tool - screw type	BTS	unit
Band installation tool - lever type	BTL	unit



Steel band shears

Description	Reference	Packaging
Band installation tool - screw type	BCT	unit



Příslušenství a nářadí – pokr.



Assembling bolts M14

Hot dip galvanised steel. Class 4.6 steel (screw) & class 4 steel (nut).

Description	Reference	Packaging
Assembling bolt BH14x25/25	1/12	100
Assembling bolt BH14x60/34	1/13	50

Other dimensions available on demand.



Securing bolts M14

Hot dip galvanised steel. Class 4.6 steel (screw) & class 4 steel (nut). Curved washers.

Description	Reference	Packaging
Securing bolt BH14x225/145 with 1 washer	1/6	50
Securing bolt BH14x350/100 with 2 washers	BH14x350/100	25

Other dimensions available on demand.



Securing bolts M16

Hot dip galvanised steel. Class 4.6 steel (screw) & class 4 steel (nut). Flat washers.

Description	Reference	Packaging
Securing bolt BH16x250/100 with 2 washers	BH16x250/100	25
Securing bolt BH16x300/140 with 2 washers	BH16x300/140	25

Other dimensions available on demand.



Turnbuckle

For adjusting the load in the line. Hot dip galvanised steel.

Minimum breaking load 3000 daN.

Description	Reference	Packaging
Turnbuckles 2 eyes M12 MBL = 3 tons	30/04	50



Shackle

For securing 2 eyes turnbuckles on any pole hardware. Hot dip galvanised steel.

Minimum breaking load 1800 daN.

Description	Reference	Packaging
Shackle M10	SH600	50

